

APPLICATION NOTE

TM

for

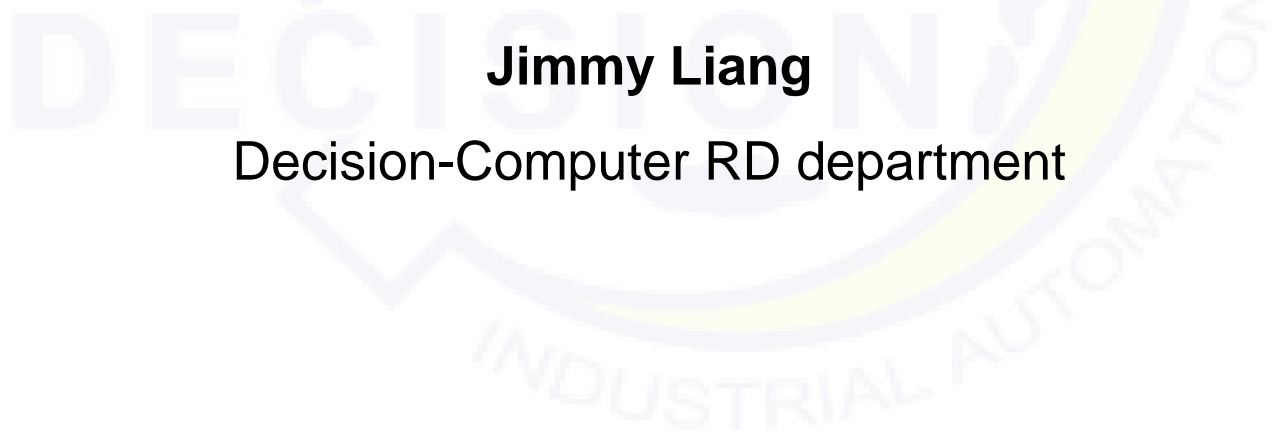
How to install the PCI 16 PHOTO/RELAY driver

28 August 2018

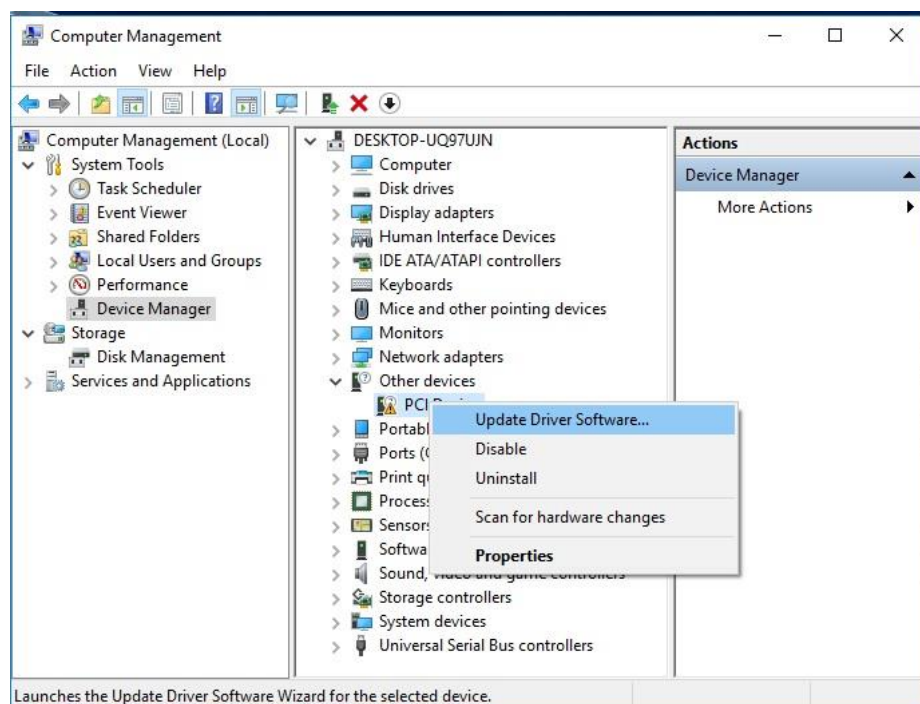
Prepared by:

Jimmy Liang

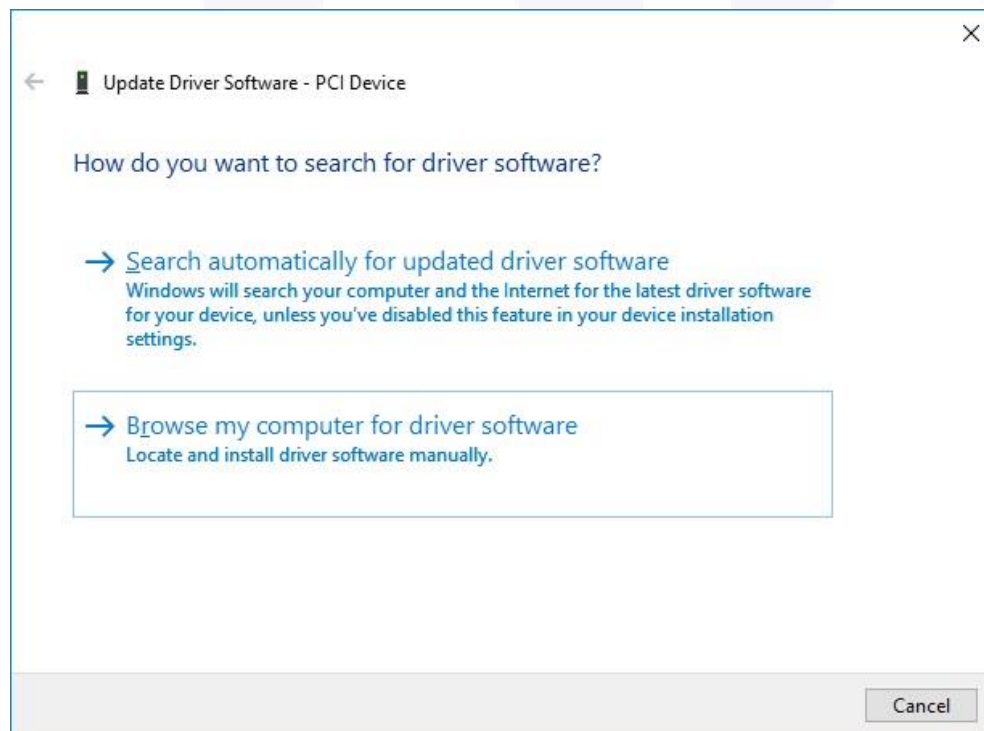
Decision-Computer RD department



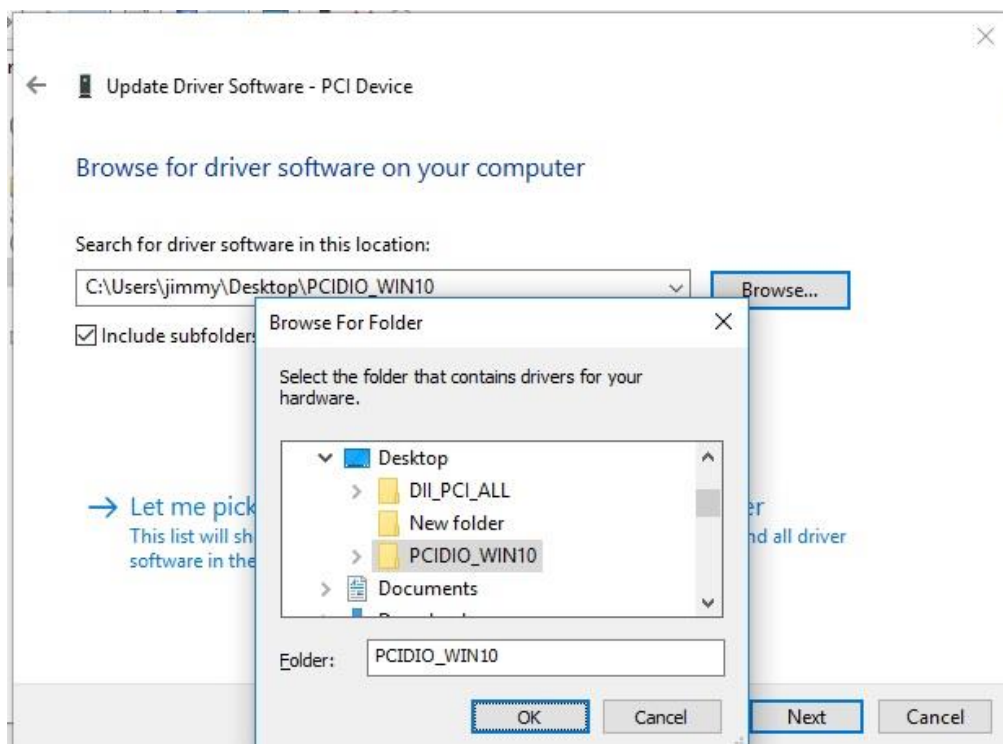
Step 1: Open the “Device Manager” and Right-click menu “Update Driver Software..”



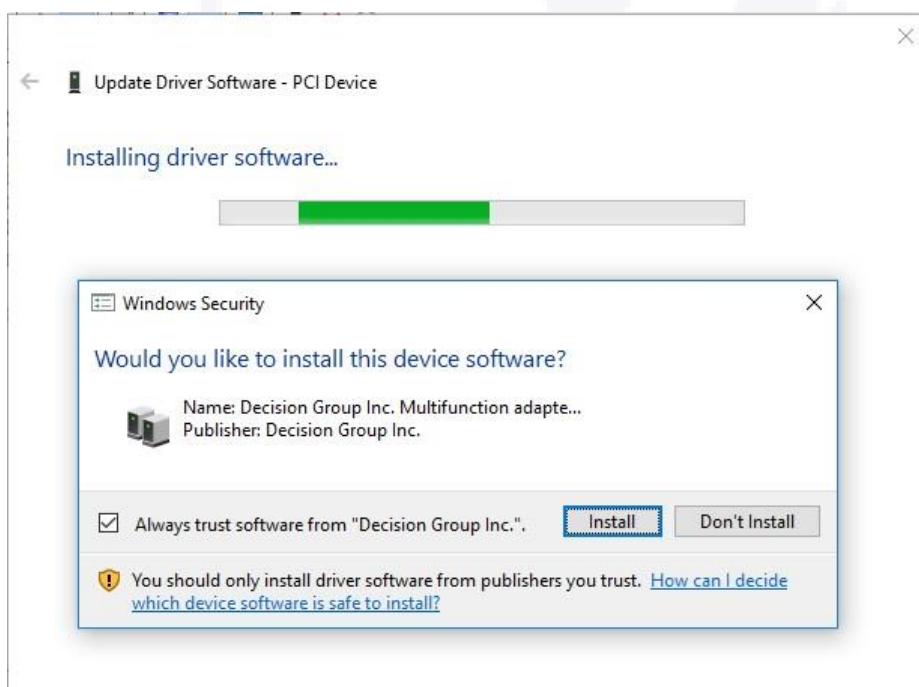
Step 2 : Click “Browse my computer for driver software”



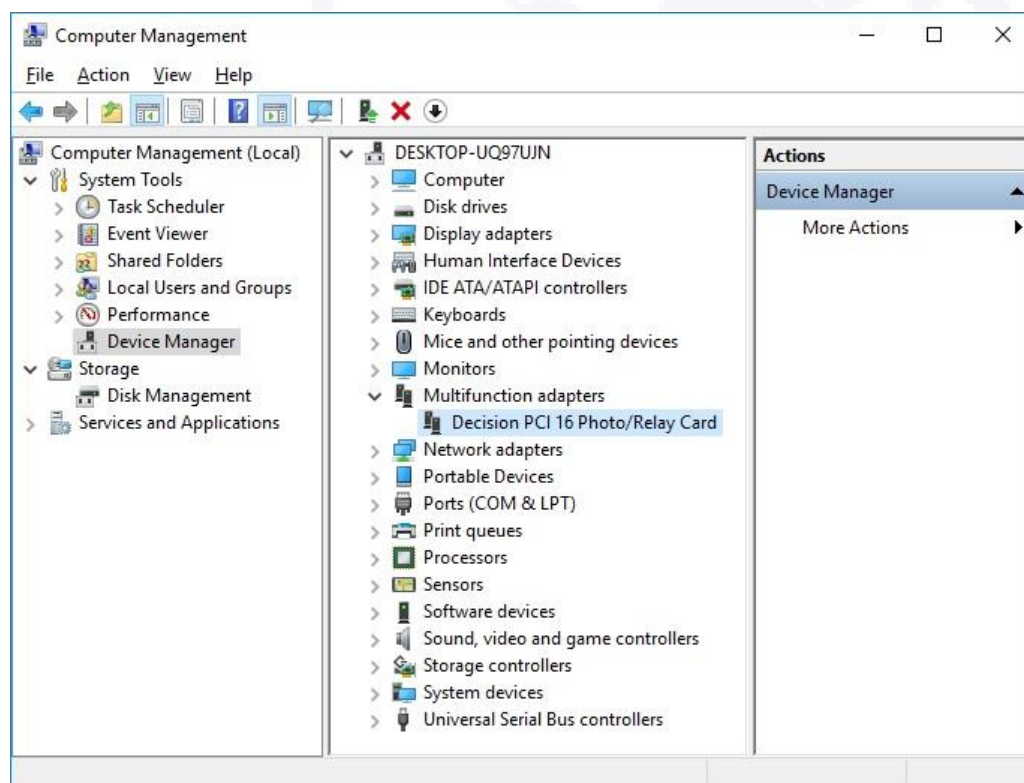
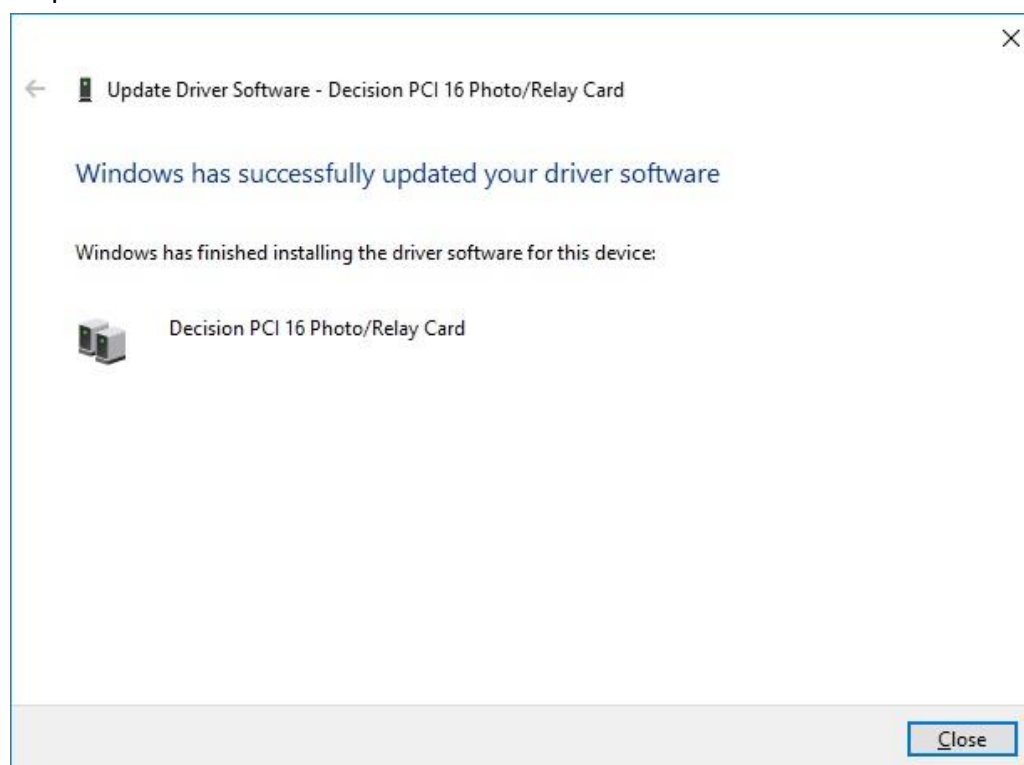
Step 3 : Select the "PCIDIO_WIN10" and "Next"



Step 4 : Click "Install"



Step 5 : Success



Decision Group Inc.

Address: 4/F No. 31, Alley 4, Lane 36, Sec.5,
Ming-Shan East Road Taipei, Taiwan.

Phone: +886227665753

Fax: +886227665702

Sales Email: decision@decision.com.tw

Global Website: www.edecision4u.com

Chinese/Traditional Website:
www.internet-recordor.com.tw